



DESCRIPTION

An advanced adhesive, enhanced with high-quality polymers, designed specifically for securely fixing tiles and natural stone on both interior and exterior surfaces of floors and walls..

Created specifically for the purpose of installing ceramic tile, vitreous/vitrified, semivitreous tile, glass mosaic tiles, precast terrazzo, and natural stones on both interior and exterior floors and walls. It is suitable for various substrates, including concrete, and can be applied underwater, making it ideal for wet areas such as swimming pools, saunas, water bodies, and washrooms. This versatile product is suitable for tile-on-tile applications as well as a slurry bond adhesive in wet-on-wet installations.

STANDARDS

Compatible with EN 12004 & ISO 13007; IS 15477:2019 Type 3T; "Adhesives for ceramic, mosaic and stone tiles"

FEATURES

- Single component, just add water
- Polymer-modified adhesive
- Economical & Easy to use
- Easy mixing & application
- For concrete/plaster surface
- Internal situations
- Enhanced flexibility & adhesion can be obtained with the addition of ADMIX 550 or ADMIX 570 (latex additives).

SUITABLE SUBSTRATES

- Concrete
- Cement sand screed
- Plaster

PHYSICAL PROPERTIES (@ 27 ± 2°C)

| | |
|---------------|---|
| Bed Thickness | up to 6 mm (suitable up to 12mm in areas of limited extent) |
| Setting Time | 24 hours |
| Temperature | 150C |
| Resistance | |

| | |
|-----------------------|---------------|
| Pot Life | 3 - 4 Hours |
| Time to Heavy Traffic | 16 - 24 hours |

Properties as per EN12004 / ISO 13007 @ 27 ± 2 °C

| Property | Min. Requirement | Typical Result |
|--|------------------|--------------------------|
| Open Time: EN 1346 (N/mm ²) | ≥0.50 | > 0.75 N/mm ² |
| Slip Resistance: EN 1308 (mm) | ≤0.50 | 0.30-0.35 mm |
| Tensile Adhesion Strength | | |
| Initial: EN 1348 - Clause 8.2 (N/mm ²) | ≥1.00 | > 1.2 N/mm ² |
| After Water Immersion: EN 1348 - Clause 8.3 (N/mm ²) | ≥1.00 | > 1.2 N/mm ² |
| Heat Ageing: EN 1348 - Clause 8.4 (N/mm ²) | ≥1.00 | > 1 N/mm ² |
| Freeze-Thaw: EN 1348 - Clause 8.5 (N/mm ²) | ≥1.00 | > 1.2 N/mm ² |

Properties as per IS 15477: 2019 @ 27 ± 2 °C

| Property | Min. requirement | TypicalResult |
|---|------------------|---------------|
| Tensile strength (N/mm²) | | |
| Dry condition | 1.5 | >1.55 |
| Shear adhesion strength (N/mm²) | | |
| Dry condition | 1.5 | >1.55 |
| Slip (less than 0.5mm) | <0.50 | <0.35 |

COVERAGE ESTIMATES

| | |
|------------------|---|
| Pack size | Coverage |
| 20 kg | approx. 1.35 - 1.55 kg/m ² /mm |

| Notch Trowel size | Consumption/m ² (@ 45°angle of trowel) |
|-------------------|---|
| 6mm X 6mm | 3.15 - 3.35Kgs |
| 8mm X 8mm | 4.20 - 4.45Kgs |
| 12mm X 12mm | 6.30 - 6.65Kgs |

Note: Coverage depends on the nature and flatness of the ground and the method of application. For good protection, it is important that all surfaces are smooth, vertical, flat and flawless, and free of ripples.

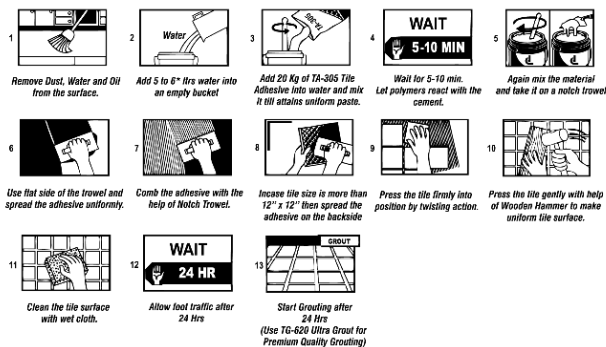
APPLICATION INSTRUCTIONS

Substrate Preparation

Before starting any work ensure that the base is:

- Adequate flatness ensures that the finished tile has a flat surface, which ensures the desired adhesive thickness.
- It is suitable for placing tiles in accordance with their intended use.
- Tiles should be dry, clean, and free of loose material and dirt.

Method of Application:



* The Powder and Liquid ratio may vary according to the job conditions.

Mixing

Add 20 kg of TA-325 to 5-6 liters of clean water. Mix thoroughly until a homogeneous, lump-free consistency is achieved. Allow the adhesive mixture to polymerize for 2-5 minutes, then mix again for 30 seconds. The adhesive is ready to use with a 2-3 hour lifespan. No need to add more water.

In cases where it cannot be mixed by weight, it can be mixed on-site at a ratio of 1:3.5 (water: powder) by volume.

In case of using latex additives, use 1 liter of ADMIX 570 with 4.55 -5.65 liters of water and 20 kg of TA-325

APPLICATION

1. Spread not more than the area which can be tiled within the open time of the adhesive.
2. Spread the adhesive mixture on the prepared surface with a spatula and comb through with a small square-toothed trowel.
3. The tiles should be arranged as the adhesive unfolds and pressed into place with a twist and slide to ensure the stability of the bed is complete. The boot time will vary by location, it will continue between heat and temperature.
4. Also, make sure there is good contact behind each tile.
5. Touch the adhesive ribs periodically and if a skin has formed, remove the adhesive and apply a new layer.
6. Leave adequate joints between individual wall and floor tiles unless self-spacing tiles are used.
7. Remove excess adhesive from tiles and joints

NOTE:

Do not use in damp conditions & temperatures less than 5°C

SPACERS

Use DELGON LATICARE spacers for uniform joint width.

GROUTING

Grouting should not be carried out for at least 24 hours. Use the appropriate grouting material from the range of cementitious TG-600 or TG-620 and epoxy grouts EG-100.

NOTE: The addition of ADMIX 550 to cement-based grouts will enhance adhesion to tile edges, increase water resistance, and improves flexibility.

CLEANING

Tools and containers may be cleaned using clean water when the adhesive is still fresh. The hardened adhesive can be removed from tools mechanically.

STORAGE AND SHELF LIFE

TA-325 has a shelf life of 12 months when stored in normal dryconditions.

PRECAUTIONS

Keep out of reach of children. Wear suitable protective clothing, gloves, and eye/face protection. After contact with the skin, wash immediately with plenty of clean water. In case of contact with eyes rinse immediately with plenty of clean water and seek medical advice.

For more details, please refer to the relevant Material Safety Data Sheet

CONDITIONS OF SALE

Sold subject to the Company's conditions of sale which are available on request.

NOTE

The information presented in this guide is based on experience and is given in good faith to assist you. It is our company policy to continue research and development; therefore, we reserve the right to update this information at any time without notice. We also guarantee the quality of our products; however, as we have no control over the location or performance of the business, we are not responsible for any loss or damage that may occur.